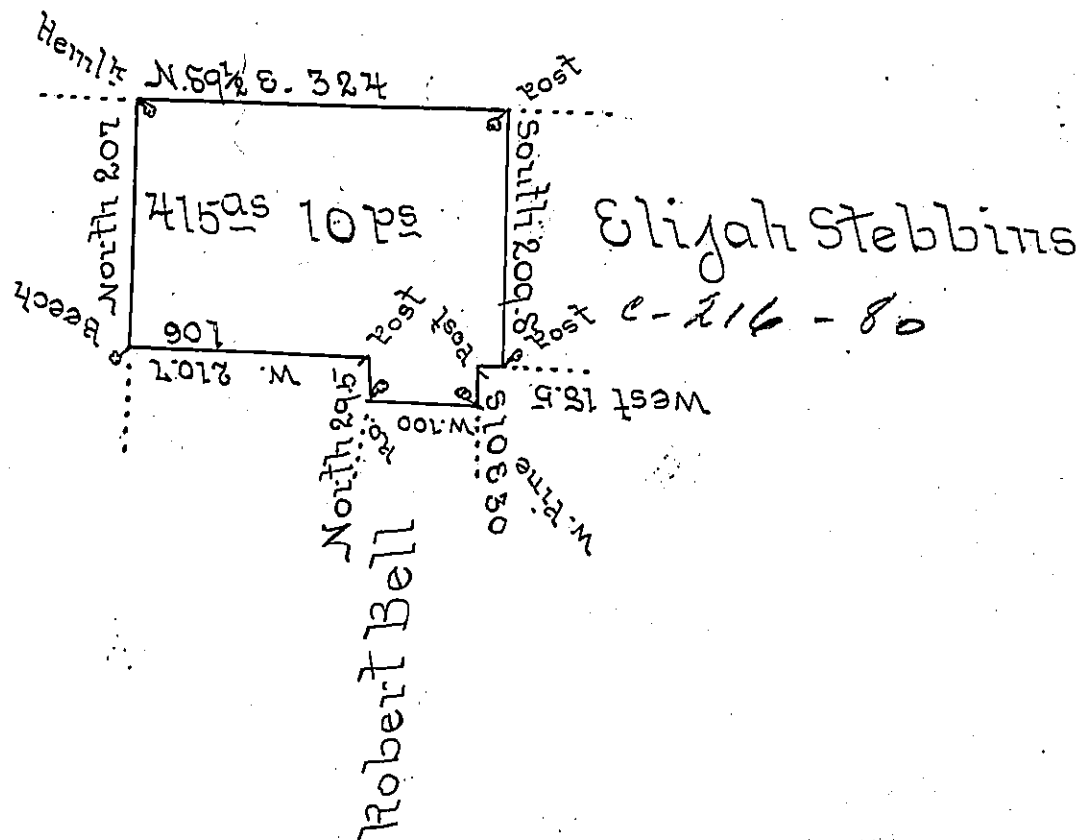


H. G. Company  
Simon Dale

Chester Hull



Draft of a tract of land situate in Brokenstraw township Warren County, west of the Allegheny river and Conewango creek; about three miles North of the mouth of Brokenstraw creek, containing four hundred and fifteen acres and ten perches and allowance. Surveyed 6th May 1819 for Christopher Greene on improvement and settlement. S

John Irwin D.S.

Jacob Spangler Esq }  
Surveyor General of Pa. }

IN TESTIMONY that the above is a copy of the original remaining on file in the Department of Internal Affairs of Pennsylvania, made conformably to an Act of Assembly approved the 16th day of February, 1833, I have hereunto set my Hand and caused the Seal of said Department to be affixed at Harrisburg, this fifth day of June 1900

*James W. Fatta*  
Secretary of Internal Affairs.